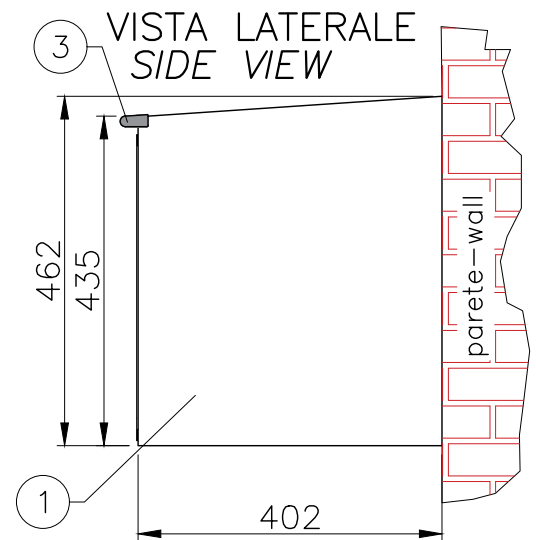
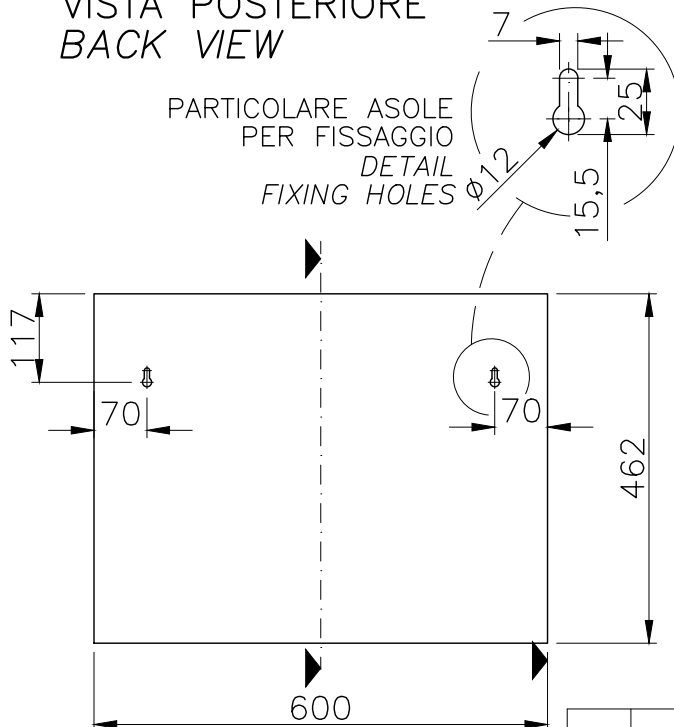


**600  
mm**

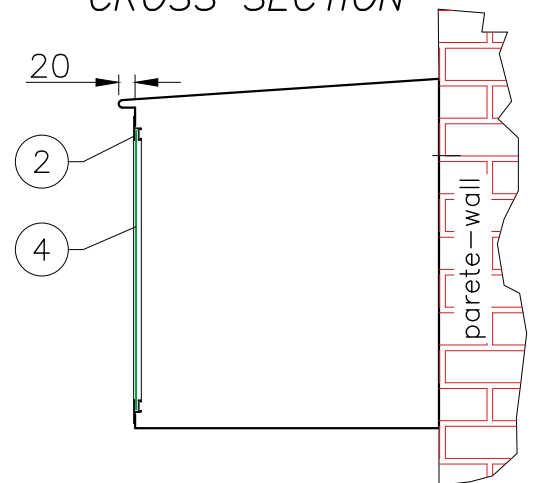
Per gruppi autopompa lunghi fino a 420mm  
For fire brigade connection length until 420mm



VISTA POSTERIORE  
BACK VIEW



SEZIONE TRASVERSALE  
CROSS SECTION



SCALA 1:10 MISURE IN mm  
SCALE 1:10 DIMENSIONS IN mm

Tolleranze generali [mm] General tolerances [mm]	± 4
Spessore min. lamierato Minimum plate tickness	7/10
Peso Weight	≈8kg

1	Cassetta di contenimento - Fire cabinet	Acciaio zincato oppure acciaio inox AISI 304 (verniciatura in poliestere a richiesta) - Galvanized steel or stainless steel AISI 304 (polyester coating on request)
2	Telaio portavetro - Frame	Alluminio anodizzato - Anodized aluminium
3	Copri spigoli - Edges protection	Nylon
4	Lastra "Fire Glass" - Fire glass for cabinet	Plastica - Plastic
5	Fermaglio - Clip	Acciaio inox - Stainless steel



**BOCCIOLONE ANTINCENDIO  
S.p.A.**

Via Indren, 2 - Z.I. Roccapietra  
13019 Varallo (VC) - ITALY  
Tel. 0163-568811 Fax 0163-322022  
info@bocciolone.com - www.bocciolone.com

Cassetta da esterno per attacco di mandata (largh. 600, 800, 990mm)  
Cabinet for fire brigade connection for truck pump (600, 800, 990mm width)

DWG-36GM-01

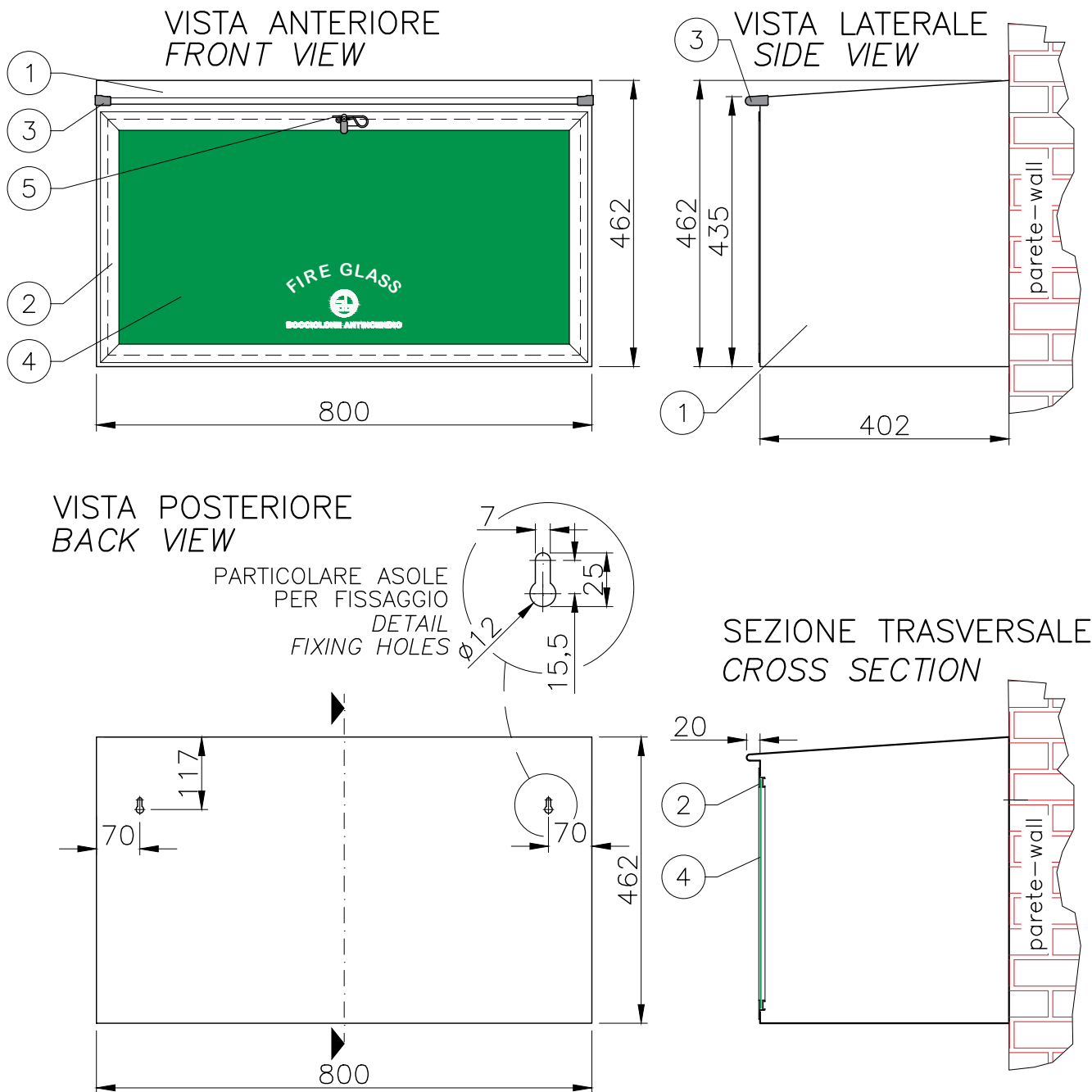
Rev. 1

Data: 17/04/2019

Foglio: 1/4

**800  
mm**

Per gruppi autopompa lunghi fino a 600mm  
For fire brigade connection length until 600mm



SCALA 1:10 MISURE IN mm  
SCALE 1:10 DIMENSIONS IN mm

Tolleranze generali [mm] General tolerances [mm]	± 4
Spessore min. lamierato Minimum plate thickness	7/10
Peso Weight	≈9,5kg

1	Cassetta di contenimento - Fire cabinet	Acciaio zincato oppure acciaio inox AISI 304 (verniciatura in poliester a richiesta) - Galvanized steel or stainless steel AISI 304 (polyester coating on request)
2	Telaio portavetro - Frame	Alluminio anodizzato - Anodized aluminium
3	Copri spigoli - Edges protection	Nylon
4	Lastra "Fire Glass" - Fire glass for cabinet	Plastica - Plastic
5	Fermaglio - Clip	Acciaio inox - Stainless steel



**BOCCIOLONE ANTINCENDIO  
S.p.A.**

Via Indren, 2 - Z.I. Roccapietra  
13019 Varallo (VC) - ITALY  
Tel. 0163-568811 Fax 0163-322022  
info@bocciolone.com - www.bocciolone.com

Cassetta da esterno per attacco di mandata (largh. 600, 800, 990mm)  
Cabinet for fire brigade connection for truck pump (600, 800, 990mm width)

DWG-36GM-01

Rev. 1

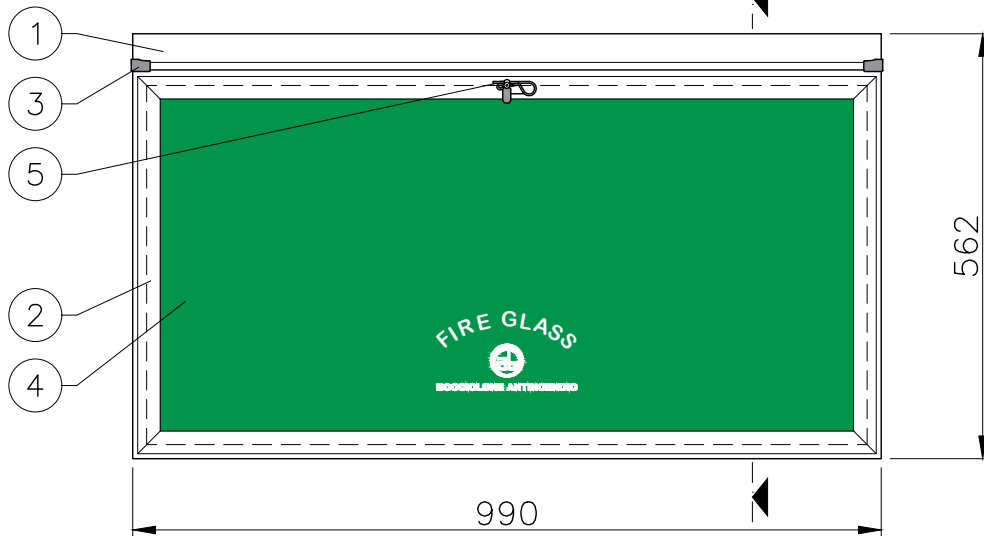
Data: 17/04/2019

Foglio: 2/4

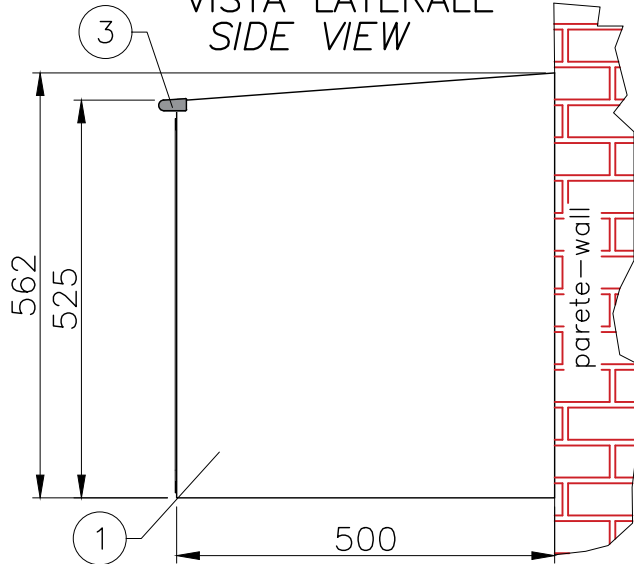
**990  
mm**

Per gruppi autopompa lunghi fino a 800mm  
For fire brigade connection length until 800mm

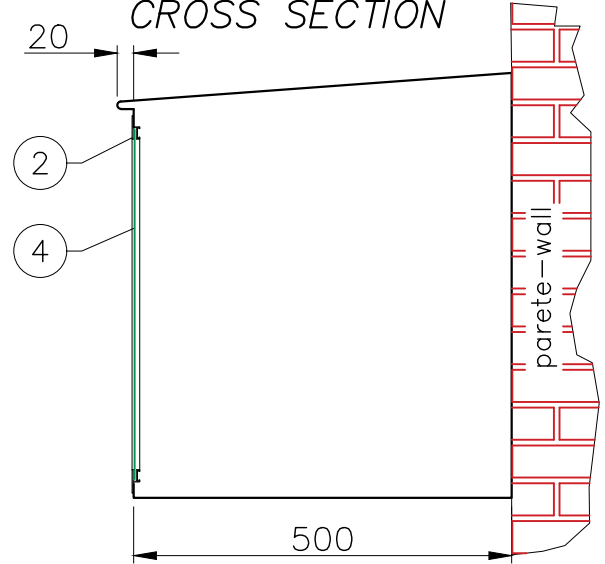
VISTA ANTERIORE  
FRONT VIEW



VISTA LATERALE  
SIDE VIEW



SEZIONE TRASVERSALE  
CROSS SECTION



SCALA 1:10 MISURE IN mm  
SCALE 1:10 DIMENSIONS IN mm

Tolleranze generali [mm] General tolerances [mm]	± 4
Spessore min. lamierato Minimum plate tickness	7/10
Peso Weight	≈14,5kg

1	Cassetta di contenimento - Fire cabinet	Acciaio zincato oppure acciaio inox AISI 304 (verniciatura in poliestere a richiesta) - Galvanized steel or stainless steel AISI 304 (polyester coating on request)
2	Telaio portavetro - Frame	Alluminio anodizzato - Anodized aluminium
3	Copri spigoli - Edges protection	Nylon
4	Lastra "Fire Glass" - Fire glass for cabinet	Plastica - Plastic
5	Fermaglio - Clip	Acciaio inox - Stainless steel



**BOCCIOLONE ANTINCENDIO  
S.p.A.**

Via Indren, 2 - Z.I. Roccapietra  
13019 Varallo (VC) - ITALY  
Tel. 0163-568811 Fax 0163-322022  
info@bocciolone.com - www.bocciolone.com

Cassetta da esterno per attacco di mandata (largh. 600, 800, 990mm)  
Cabinet for fire brigade connection for truck pump (600, 800, 990mm width)

DWG-36GM-01

Rev. 1

Data: 17/04/2019

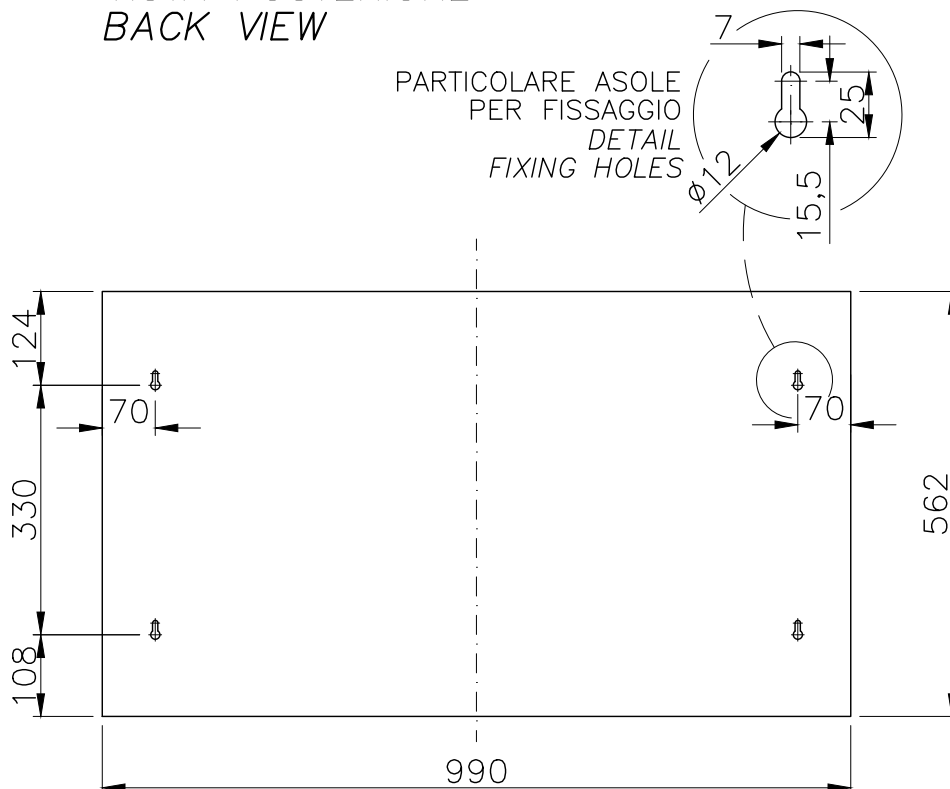
Foglio: 3/4

990  
mm

Per gruppi autopompa lunghi fino a 800mm  
*For fire brigade connection length until 800mm*

VISTA POSTERIORE  
BACK VIEW

PARTICOLARE ASOLE  
PER FISSAGGIO  
DETAIL  
FIXING HOLES



SCALA 1:10 MISURE IN mm

SCALE 1:10 DIMENSIONS IN mm

Tolleranze generali [mm] General tolerances [mm]	± 4
Spessore min. lamierato Minimum plate tickness	7/10



**BOCCIOLONE ANTINCENDIO  
S.p.A.**

Via Indren, 2 – Z.I. Roccapietra  
13019 Varallo (VC) – ITALY  
Tel. 0163-568811 Fax 0163-322022  
info@bocciolone.com – www.bocciolone.com

Cassetta da esterno per attacco di  
mandata (largh. 600, 800, 990mm)  
*Cabinet for fire brigade connection for  
truck pump (600, 800, 990mm width)*

DWG-36GM-01

Rev. 1

Data: 17/04/2019

Foglio: 4/4